

Pen & Palette



MARCH 2011

From Our President.....

.....Wanda Brewster

Hello Friends,

Well March is the month that spring begins and we will all be happy to welcome warmer weather, beautiful flowers, and to shake of the trappings of winter again. We are looking forward to our Annual Spring Show, which will be the 11th through the 14th of May at the Hall Building. The art show committee worked very hard to find a new venue for this wonderful show this year but unfortunately the opportunities that we had disappeared despite the concerted effort. We can still have a great show and with all of the planning taking place by Earlene and her committee members, I, for one, am looking forward to a beautiful and well-attended show. There are plans for cash prizes and we are soliciting donations from vendors for art supplies as well. Of course, this is an open show for any artist in our community over 18 years of age, so I would encourage you to tell your friends and associates in other art groups about this opportunity. We will have several categories again this time so there will be more chances to win awards. We will be putting a prospectus and application on our website and also in the newsletter next month. We would encourage you to take a moment to look these over and print out the application so that you can fill it out and bring it with you to the registration on May 10th—between 10:00 AM and 1:00 PM. This show is an important part of who we are as an Art Association and we are going to need as many volunteers as possible to showcase our work the way it should be done. You will notice on the application that if you volunteer your time you will be given a price break on the cost to enter your work. We all should be happy to help to make this show a success. If we each give a little time to this effort it will make it easier for the committee who's hard work pulls this together each year. Earlene will have sign-up sheets at the meeting on the 16th. Please take this opportunity to find the time that would work best in your schedule. If you won't be at the meeting you can call Earlene and she will be happy to find a job for you or find a time to sit the show. Our big push this year is for PUBLICITY, so make sure to tell everyone you know about this show. THANK YOU in advance for making this show a success.

Please take a moment to read over the changes that we are proposing for the by-laws. The information is enclosed in this newsletter. The changes are practical and reflect how our organization is set up at this time. You can refer to your yearbook for the current by-laws if you wish to compare them. We will be voting on them at our April meeting.

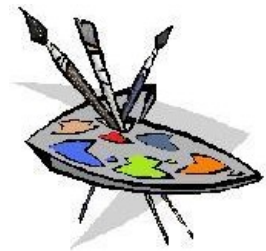
You will also find an instruction sheet for submitting your artwork for the inclusion on our website. Bobbie has taken the time to give detailed instructions for this and has offered to help anyone who has questions and is interested in the opportunity. This is a chance to get your artwork recognized free of cost, another benefit of membership in the SWA.

Another important piece of information is the copyright article written by Donna Shaver in this month's newsletter. Donna has given us good insight into this complicated subject matter.

(Continued on next Page)

Inside this issue:

From Our President	1
Hang 'em High	2
February Minutes	2
Art events and Workshops	3
Proposed By-Law Changes	3



Special points of interest:

- From Our President (p. 1)
- By-Law Changes (p. 3)
- Inserts
- Copyright Law (p. 4,5)
- Your Picture on our Website (p. 6)



Club Officers

President	Wanda Brewster	326-3957
1st V. P.	Earlene Holmstrom	696-0421
2nd V.P	Jody Lacy	256-9741
Rec. Sec.	Jean Toepfer	694-9606
Corr. Sec	Millie Schofield	944-9555
Treasurer	Tammy Turner	256-0639
Newsletter Ed.	Dave Rosenstein	909 7824
Webmaster	Bobbie Myers	699-2164
Program	Marianne Stokes	574-2189
Membership	Bobby Forbes	982-4085
/Yearbook		
Hosts	Jo Purviance	694-5738
/Hospitality		
Historian	Jeanine Liston	887-4579
Publicity	Becky Leventis	574-5096

From Our President

(from page1)

It would be a good idea to read this over carefully before entering our art show as well as others in the area to make sure we are "Legal." All of the art shows require that we submit only original work. Donna's article gives us guidelines to use when deciding if our works meet the requirements of these shows.

And finally, I am very excited about this month's demonstration by Craig Srebnik, an internationally known artist who is in our area for a short time. He has given a few demonstrations to other art groups and has received rave reviews. We are very fortunate to be able to have this distinguished artist visit us this time. We plan to have a very short business meeting and then go straight to Mr. Srebnik's demonstration. We will not have a show and tell segment this month since his program is approximately 2 hours, but we will plan to take a couple of breaks. He will have so much interesting information we will want to take advantage of his time with us. We may have several guests at this time so please welcome them to our group.

I look forward to seeing you all on Wednesday March 16th at 10:00 AM. (You might want to get there a little early so that we can get started right away.) Don't forget it will be at our new location at the Vancouver Heights United Methodist Church on MacArthur Blvd.

Smiles,
Wanda

Hang 'Em High

Dulin's Village Café: 1708 Main St., Vancouver. This Restaurant has a space for about 24 paintings. Pictures hang for Two months. Call **Jeanine Liston** at 887-4579.

United Methodist Church: 33rd & Main Street, Vancouver. Call **Willa Curtis** at 573-1335.

Unitarian Universalist Church of Vancouver: Located at 4505 E. 18th Street in Vancouver, has a beautiful gallery-like space. They take a 15% commission. Call Elizabeth Waters at 666-1593.

Vancouver Pizza: 1650 SE 15th St. #B-100, Vancouver, Washington, 98683. Off 162nd and 15th in Fisher Landing area. Call **Pam** at (360)-772-3994. Can hang artwork for 2 months. Discuss with **Pam** the owner.

Kojis Chiropractic: 107 E. Mill Plain, Vancouver. Would like to hang paintings in his office. Call **Lorna** at (360) 254-8866 to discuss arrangements.

Minutes of the February Meeting

Despite the snowstorm, we had a sizable group attending the first meeting at our new location. President Wanda Brewster called the meeting to order followed by the approval of the minutes as printed in the Pen & Palette. Tammy Turner then gave the Treasurer's report.

First Vice President Earlene Holmstrom reported on our upcoming spring show. With the help of Katey Sandy, we've been looking at downtown locations to coordinate our show with other First Friday activities. The potential increase in foot traffic might justify the cost of renting space. Publicity chair Becky Leventis said we need to quickly decide on a location in order to effectively advertise our show. Marianne Stokes commented that the Hall Building is developing a reputation for presenting quality exhibits. Earlene circulated a sign-up sheet for volunteers to work at the show.

Wanda and Tammy have researched various choices regarding our organization's liability insurance. Our current policy is the best possible rate available. We do not need insurance for our new meeting location and, based on Washington State law for nonprofit organizations, we do not need it to protect the board members. Since we are considering other venues for our shows and event insurance can be quite costly, we voted to keep the insurance for one additional year.

At our April meeting, we will be voting on some minor changes in our by-laws. I gave a brief description of the revisions and noted that the specific text would be printed in our March newsletter.

(continued)

<http://societyofwashingtonartists.com>

Mary McCarty, an accomplished pencil/mixed media artist, demonstrated a variety of her techniques and tools used to illustrate various plants and flowers. She emphasized the importance of underlying design, paying particular attention to negative space, and correctly reflecting the biological structure of each plant. Artist of the Month *Shirley McConnell* followed by exhibiting a selection of her watercolor/acrylic pieces and explaining how she developed the unusual backgrounds in her work.

Submitted by Jean Toepfer



Proposed Changes to the SWA By-Laws

This is a summary of the proposed changes to the SWA by-laws. The changes are bold/highlighted. The complete by-laws of the SWA are printed in the SWA yearbook. If you have any questions or comments, please contact Jean Toepfer or Wanda Brewster.

Article 3—Membership

Section I—Membership is open to anyone **18 or older** interested in actively furthering the purpose of the Society.

Section II—(2nd paragraph) Members joining the SWA after **January 1** are required to pay only 1/2 the annual dues.

Article 5—Duties of Officers

Section III—The Recording Secretary shall keep the minutes of all meetings and shall be responsible for ***overseeing and assisting in the compiling of the yearbook information for distribution.***

Section VI—The Corresponding Secretary shall be responsible for carrying on the general correspondence of the Society with direction from the Executive Board, for keeping copies of all correspondence and ***shall assist as needed in the production and distribution of the newsletter.***

Article 7—Executive Board

The Executive Board shall... (add final sentence). ***The board may by acclamation appoint a committee chair to serve as a voting member of the board.***

Submitted by Jean Toepfer

Art Events and Workshops

The Old Masters painting group meets each Friday at 10:00 a.m. in the basement of the Columbia Presbyterian Church located at 805 Columbia Ridge Dr. (2 blocks east of Lieser Rd) Come and enjoy the company of other artists. A great group!!

Free Model Guild For anyone who loves drawing, the Free Model Guild meets at 12:00 noon on Saturdays at the Marketplace Mall on the corner of Evergreen and Columbia in downtown Vancouver. Bring pencil and paper for sketching novices. Please call Marianne Stokes at 574-2189. No Fee! Also call about the free model guild meeting in Jantzen Beach on Wednesdays at noon.

Marianne Stokes Classes: Marianne Stokes now has classes in Mixed Media Fundamentals meeting weekly at 10:30 at Jantzen Beach every Tuesday. Fundamentals and technical ideas are covered as well as subjects such as perspective, fabrics, glass, portraiture, and more. For information call Marianne at (360) 574-2189.

The Battleground Art Alliance (BGAA): Meets the first Wednesday of each month at the Senior Center in Battleground, 116 NE 3rd Avenue. For more information, call Linda Kliever at 687-7414. E-mail: www.bgartalliance.com

The Northwest Oil Painter's Guild: Meets the 3rd Tuesday of each month at the Geneological Society Center, 717 Grand Boulevard, Vancouver. Plein aire painting encouraged. For more information call Bob Fleischmann at (360) 258-1102 (bobandpetey@comcast.net) or Jim Gola at (360) 263-2201 (jimgola@hotmail.com).

Northbank Art Gallery: Classes of all types offered in their downstairs studios. Call (360) 693-1840 for information.

Above, left: Mary McCarty demonstrates her botanical art. Below, one of Shirley McConnell's paintings,



Copying, Copyright, Ethics, and Original work: Vital Information for *All* Artists

Most of us probably learned to paint by using pictures we found in books, magazines, calendars, greeting cards, and catalogs—or images on the internet. It's a great way to start, because it keeps the focus on developing painting skills without the hassle of drawing or photographing our own subjects. But once we start entering our work in shows or selling it, the use of source materials other than our own is governed by the laws of copyright. Copyright laws are extremely complicated, but understanding the basics where your art is concerned can help you avoid being disqualified from shows, or—even worse—being sued.

Copyright: Most photos you find in print or online are copyrighted. All rights to the image belong to the copyright holder. That means that no one else can legally copy the photo *in any form* without his or her permission. Copyrighted images are **NOT** required to carry the copyright symbol or “all rights reserved” statement, so you can't know by looking at it.

To copy a work in another medium—a painting from a photo, for example—is to create a “derivative work” under copyright law. A legal derivative requires either that the source is not under copyright, or the copy is made with the express permission of the copyright holder. You can copy images on which the copyright has expired, but this can be trickier than you might think—*far* beyond the scope of this piece. Copying the work of the teacher in class is to create a derivative work. If the teacher doesn't mind, you would be safe from infringing on copyright, but it would be difficult to claim that the work is original.

Many people think that by changing a few elements in a photo, they are creating something original. To quote Marion Boddy-Evans from **About.com** on art and copyright: “It's certainly not a legal test, but as a rule of thumb consider whether, if your painting were put next to the painting or photo you're copying, would someone say you'd based it on the original?” You are probably attracted to the image because of its excellent composition and interesting subject. It is highly unlikely that you would change either of those, because that's what makes it a good image. Leaving out a few trees, adding a fence in the foreground, etc. will not make it your own work.

This is not to say that you can't consult photographs to see (for example) the coloring on a parrot fish for an underwater scene that you have created. You can certainly use photos as reference material for your original work—how a wave curls, the color of the sea in the Bahamas, or how a fern grows—so that you can represent the real world accurately in your own composition. And you can use anything for inspiration, as long as the resulting work is truly original.

Ethics: In addition to the legal issue, there is an ethical issue regarding art shows. The judge of a show has to assume that all work is original, and confers awards on that basis. When a beautifully composed painting with an interesting subject has been created from a photograph taken by someone else, the artist has an unfair advantage. The composition and subject are not original. In fact, the photographer has done most of the creative work. Another work that is entirely original loses out because it can't match a painting copied from a photograph by (for example) Art Wolfe.

It's helpful to remember that photographers are artists, too. They apply the same rules of composition. And many of them work far harder than we do to capture their images. Just as we would not be happy to find another artist copying our work and showing or selling it as his or her own, so too are photographers upset to find their intellectual property rights violated.

There are a number of sources of free images, both on the internet and in reference photo books for artists. Although you may be able to copy these images legally, you will have to make your own judgment about the ethical issues. And read the show prospectus carefully—they may still be unacceptable for entry.

Classroom & Workshop Work: Many art societies exclude class and workshop paintings from their shows. Even if the prospectus does not prohibit such work, copyright law still prevails. If you enter work you did in a class, it must be from your own reference sources, and it must be entirely your own work. If the instructor actually paints on your painting, either demonstrating a technique or correcting a mistake, it is no longer your original work.

It is up to each artist to be conversant with these issues. The following are three sources of information that you may want to consult: **About.com** on copyright for artists, by **Marion Boddy-Evans**
<http://painting.about.com/od/copyrightforartistsfaq>

CJ Rider, “**Ethics & Copyright Reminders**—<http://ridercreations.com/ETHICS.htm>

World Intellectual Property Rights Organization, “**Learn from the Past, Create the Future: The Arts and Copyright**”, **August 2007** http://www.wipo.int/freepublications/en/copyright/935/wipo_pub_935.pdf

Donna Shaver

Disclaimer: I am not an expert in copyright law, but I am a librarian by profession and have been a serious nature photographer for

35 years, so I have seen copyright issues from several perspectives. I have consulted a number of sources, and compiled what I have determined to be the most relevant information, but I am not an attorney. This article is **NOT** a substitute for legal advice.

Publicize Your Art for Free

By Bobbie Myers

Would you like to share examples of your art with friends, family, and potential customers? The SWA will post photos of up to 10 drawings/paintings/sculptures per member on its Members Gallery webpage <http://societyofwashingtonartists.com/MembersGallery.html>. The actual number of photos posted will depend on size and proportions of artwork and which display style you want (see webpage for examples). SWA will list your name, email address and a brief statement about you (see site for examples). We will also link to your website if you have one.

Email titles of artwork and information about yourself with jpg files of artwork (from your digital camera or photo CD) as attachments to webmaster@societyofwashingtonartists.com or bobbie@pacifier.com. Photos are best at about 600 pixels wide at 72 dpi or at a file size between 100 and 500 kb. I can down sample larger photos to fit if you are uncomfortable manipulating files yourself. I can also make some adjustments for minor distortions but I cannot correct hotspots and reflections. Below are some hints on taking photos of paintings for the web.

1. Take photo in bright, indirect natural light. Outside on a bright overcast day is best.
2. If photographing on a sunny day, place painting in even, light shade—under a roof overhang, not under a tree in dappled shade.
3. If you must use artificial light, bounce light off a white surface on painting and do not use a flash. Direct light can cause hotspots, washed-out areas, and shadows on paintings with shiny surfaces (Glass/varnish/Plexiglas) or rough textures (thick acrylics or oils)>
4. Take paintings under glass/Plexiglas out of their frame to avoid reflections. If this is not possible make sure surface is clean and take extra care to avoid reflections from lights, windows, etc.
5. Shoot straight on to avoid distortion—camera should be perpendicular to painting. I can correct minor distortions in Photoshop or similar software if absolutely necessary.

The following website <http://www.betterphoto.com/exploring/shootingPaintings.asp> gives excellent examples of what to do and why. The link is to the introduction page; there are 5 other important pages listed at the bottom of the intro page—click on them.

Email me if you have questions. I hope to see photos from all of you soon!

Bobbie Myers, Webmaster

Save Yourself Big Bucks and Earn Money for Us!

Remember, we're part of
The Alliance Program at
American Frame Corporation.
When you use their picture
frames and framing supplies
we get a check for 5% of
your order. You'll save over
50% on American Frame's
premium products- and we get
a full 5% of the order
donated back to us!
Call today for your handbook
1-800-537-0944

*And don't forget to
tell them you're a member!*



Another painting of Shirley McConnell.

Pen & Palette

The Pen & Palette (USPS No. 595-930) 4909 ne 147th Ave, Vancouver, WA is published monthly by the Society of Washington Artists. Periodicals postage is paid at Vancouver, WA 98661. \$10.00 of each membership fee goes to Pen & Palette subscriptions. POSTMASTER: send address changes to:

Pen & Palette
P. O. Box 2992
Vancouver, WA 98668

Mailed Periodicals
Postage from
Vancouver, WA
98661

PEN & PALETTE

Membership Renewal

Membership dues are \$35.00 per person, \$45.00 family.

The 2011-2012 membership dues are now due and payable. They should be paid before the end of June. Send check or money order to SWA at P. O. Box 2992, Vancouver, WA 98668 or pay at next meeting.

Name _____

Address _____

Phone _____

New Member _____ Renewal _____

E-mail _____

I, _____, hereby apply for membership in the Society of Washington Artists for the 2011-2012 fiscal year which runs from July 1, 2011 through June 30, 2012.

Next Meeting

Wednesday

March 16, 2011

Vancouver Heights United
Methodist Church
5701 MacArthur Blvd
Vancouver, WA

9 AM Setup
10 AM General Meeting

The Pen & Palette newsletter is published monthly. Deadline for submitting articles is the last week of each month. Articles can be phoned in, mailed in, or Emailed to David Rosenstein, 4909 N. E. 147th Ave., Vancouver, WA 98682. Phone 909-7824 or e-mail at artmenscb@hotmail.com, or Calyx109@yahoo.com. Any art related information, etc. will be greatly appreciated by all our readers. This is everyone's newsletter. Let's all support it.